

Sensor Data Ecosystems



Prokop Jehlicka
HERE Technologies | June 2017

Organised by:

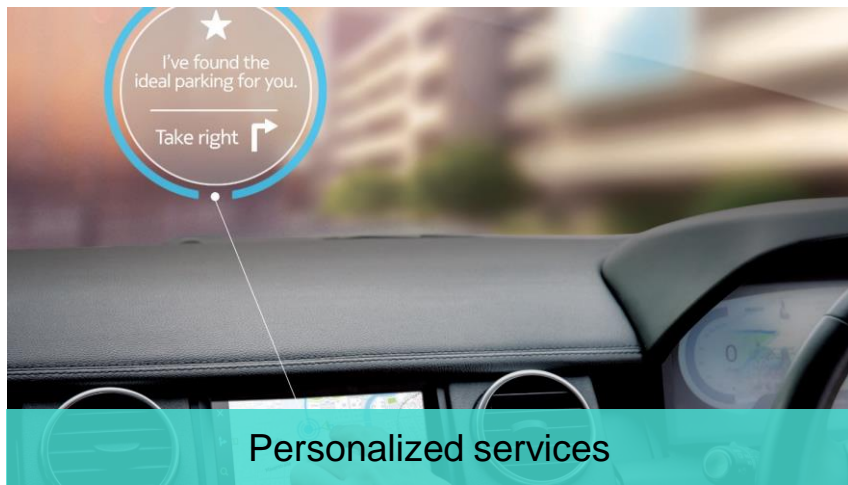


Hosted by:

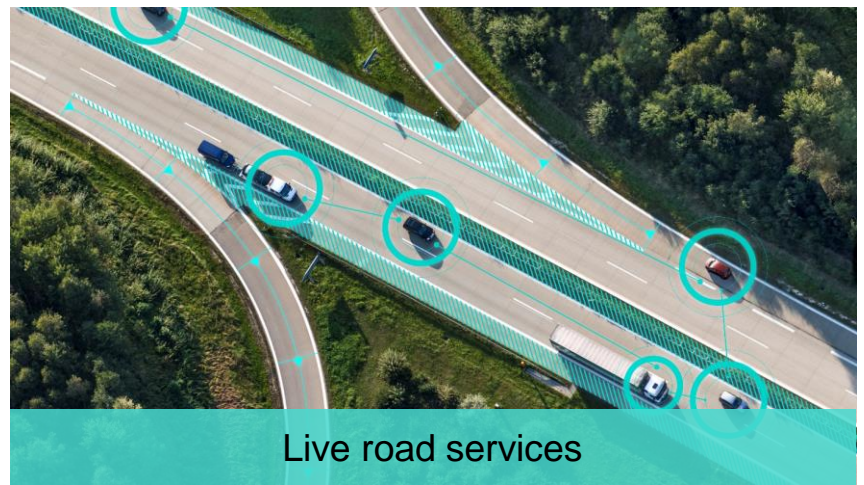


Supported by:





Personalized services



Live road services

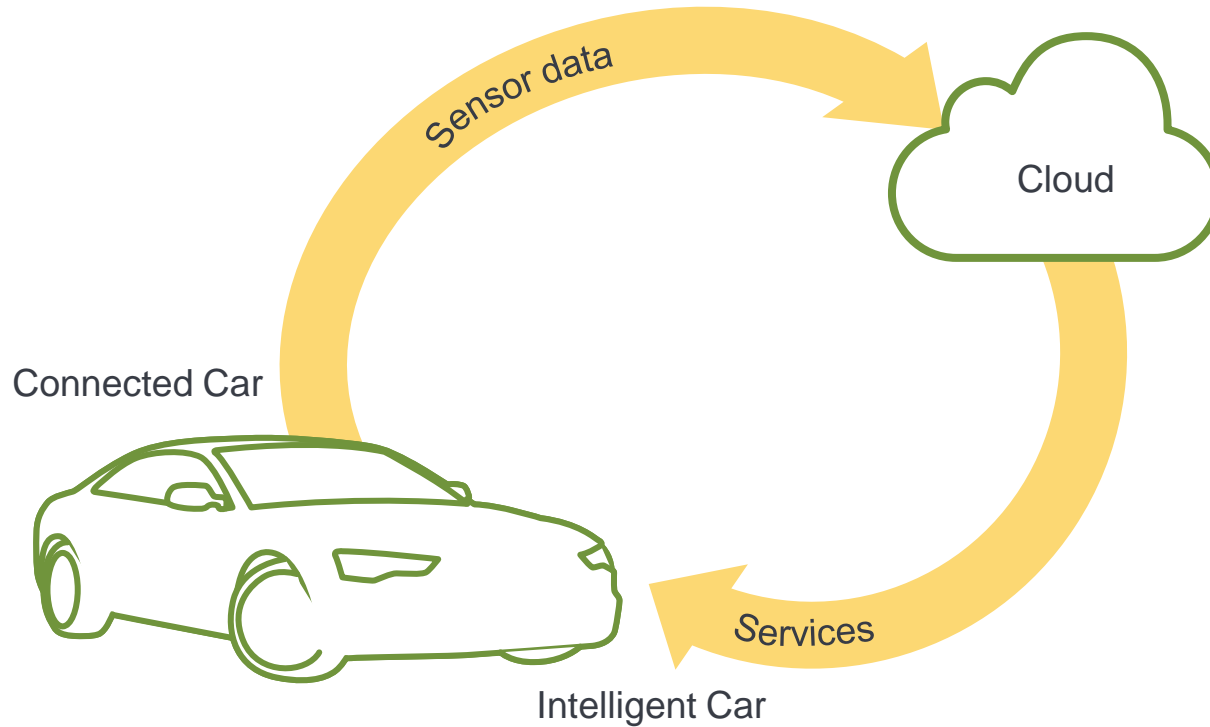


Safety services

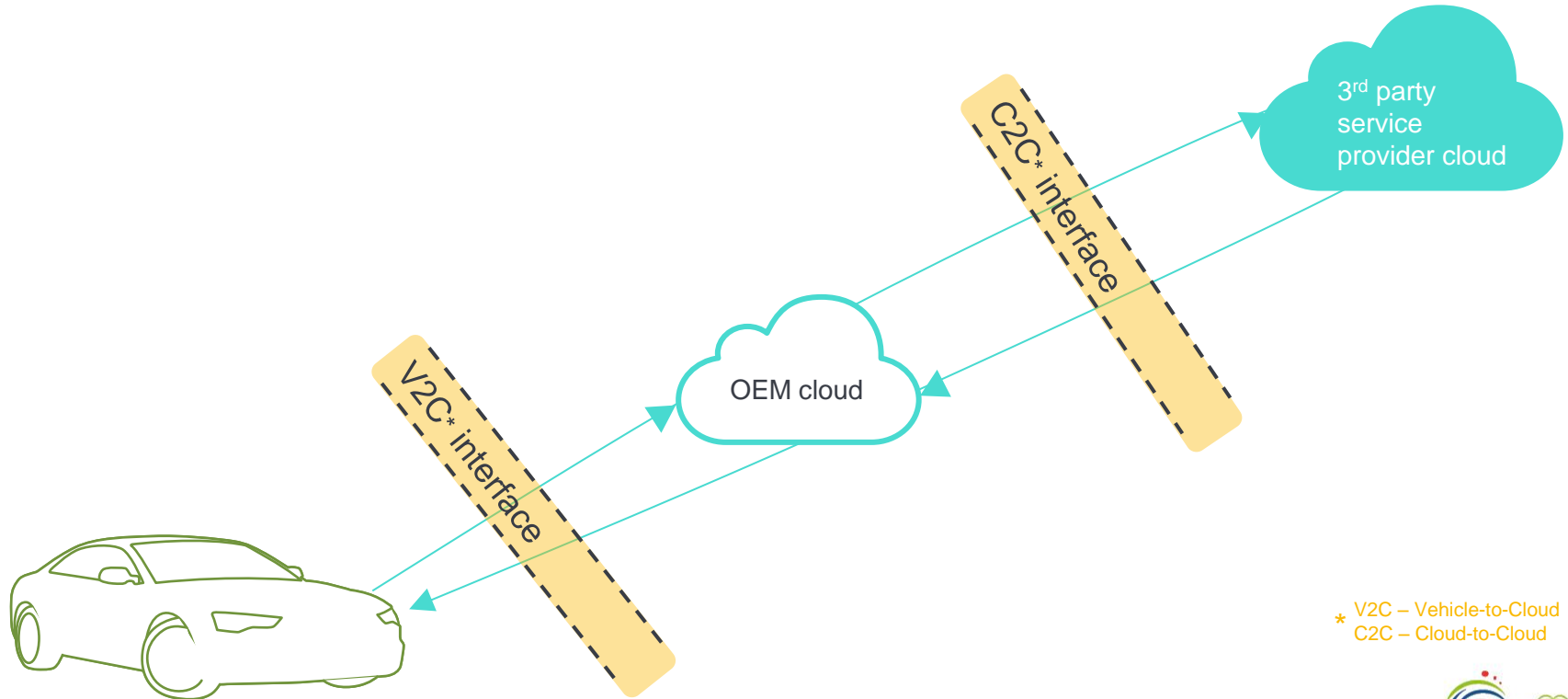


Vehicle automation

Closed feedback loop between the car and the cloud



The sensor data interfaces

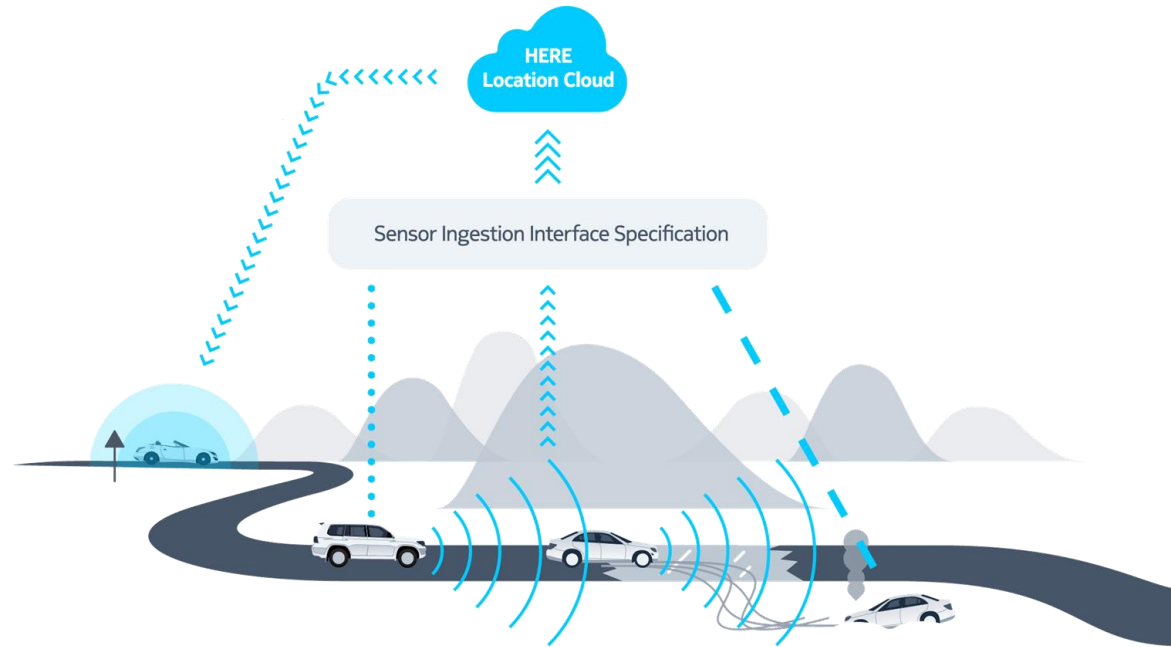


* V2C – Vehicle-to-Cloud
C2C – Cloud-to-Cloud

Interface Challenges

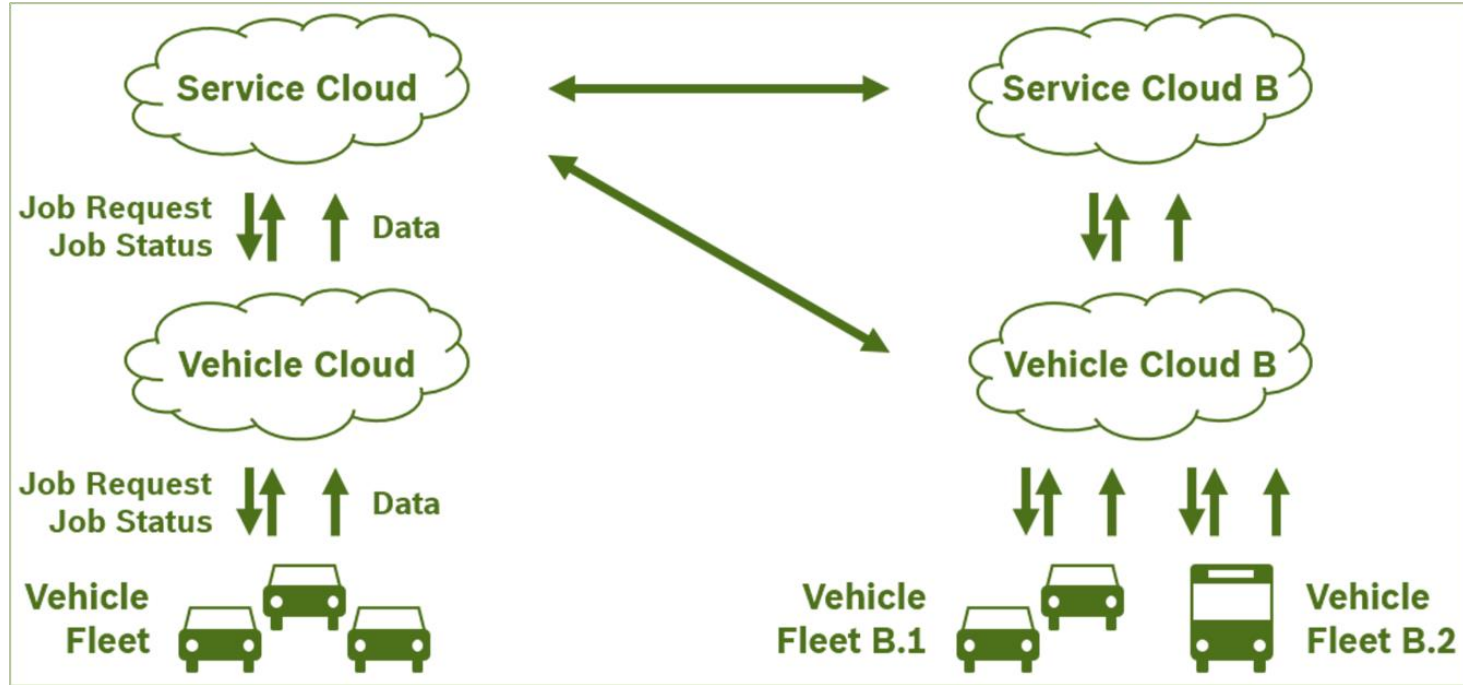
- Data incompatibility
- Siloed data streams
- Additional interfaces required to ingest data by third parties
- Data loss
- Implementation overhead

Introducing SENSORIS



- Standardization of sensor data content
- Vehicle-to-Cloud / Cloud-to-Cloud
 - Sensor manufacturers
 - Car manufacturers
 - Location-based services provider
 - Mobile network operators
- Part of Open Autodrive Forum
 - Focus on Sensor Data upstream
 - Alignment with NDS, ADASIS, TISA

SENSORIS architecture: Multi-role model



Use Case: Real-time services



Traffic flow
Traffic incidents



Hazard warnings

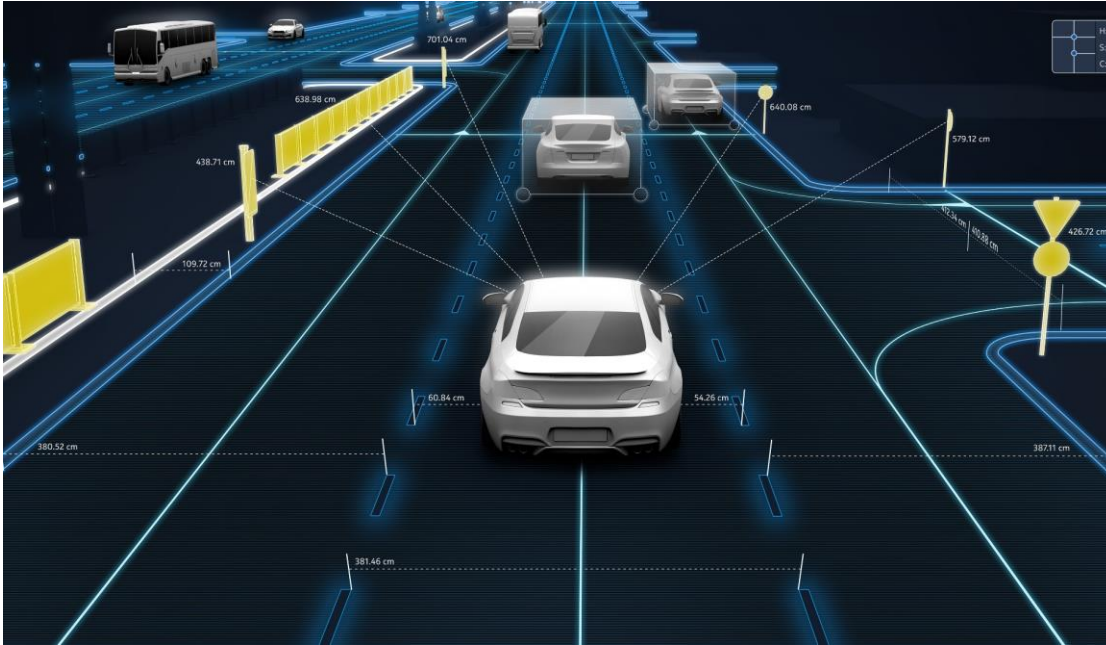


Environmental conditions



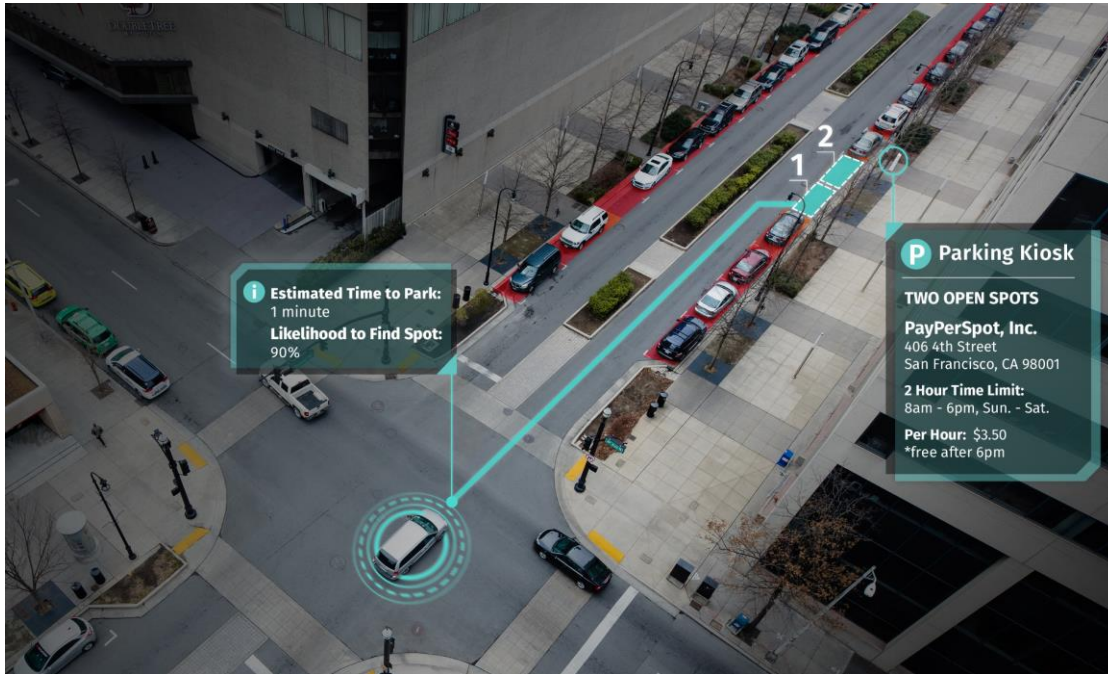
Traffic signage

Use Case: Map maintenance



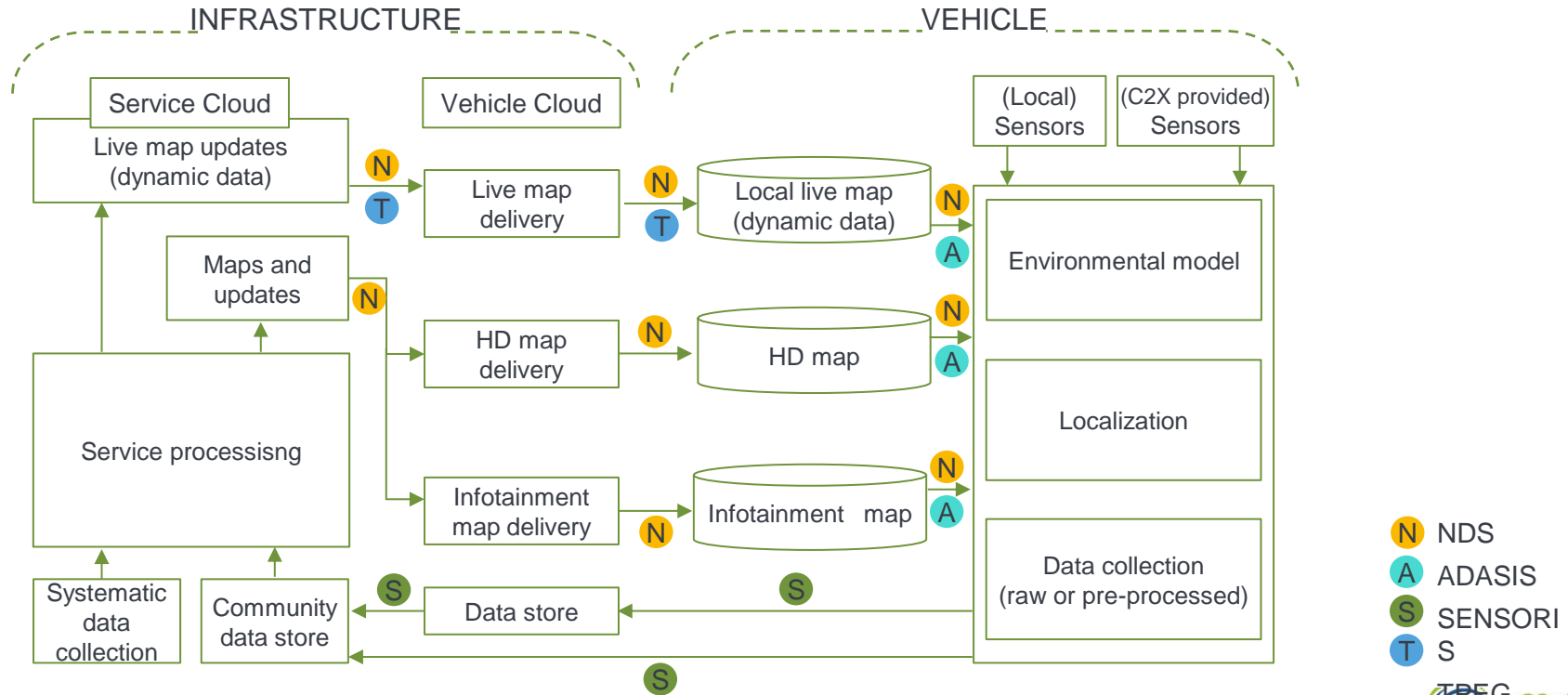
- Road geometry and attributes
- Lane geometry and attributes
- POI entries and exits
- Road condition

Use Case: Statistical analysis



- Historical and real-time data analysis
- Personal preference learning
- POI recommendations

SENSORIS in the context of other standardization efforts



Thank you!

Contact

Prokop Jehlicka

prokop.jehlicka@here.com

HERE Technologies
Schwalbach
Am Kronberg Hang 8
65824 Schwalbach
GERMANY

here